

## COMPANY OVERVIEW

2025





**1.5 Million DIA"**  
SPOOL FABRICATION  
CAPACITY

**6,000 t**  
SKID & MODULES  
ASSEMBLY CAPACITY

**ZERO**  
INCIDENT  
POLICY

 Ningbo FTZ / China  
56,000 m<sup>2</sup>

CIMTAS NINGBO, member of ÇİMTAŞ GROUP, provides process & OEM piping, skid-mounted process assemblies and modularization solutions to power, oil & gas and petrochemical industries, from our brand new facilities at the Ningbo Free Trade Zone in the Zhejiang Province of People's Republic of China.



More than **580** Projects in **57** Countries  
More than **63 Billion USD** Historical Contract Value

**54<sup>th</sup>** @ ENR Top 250 International Contractors List - 2024  
More than **20,000** Employees

**ENKA**



OIL, GAS & PETROCHEMICALS



POWER PLANTS



INFRASTRUCTURE



BUILDING WORKS



# BUSINESS LINES



PIPE SPOOLS



MODULARIZATION



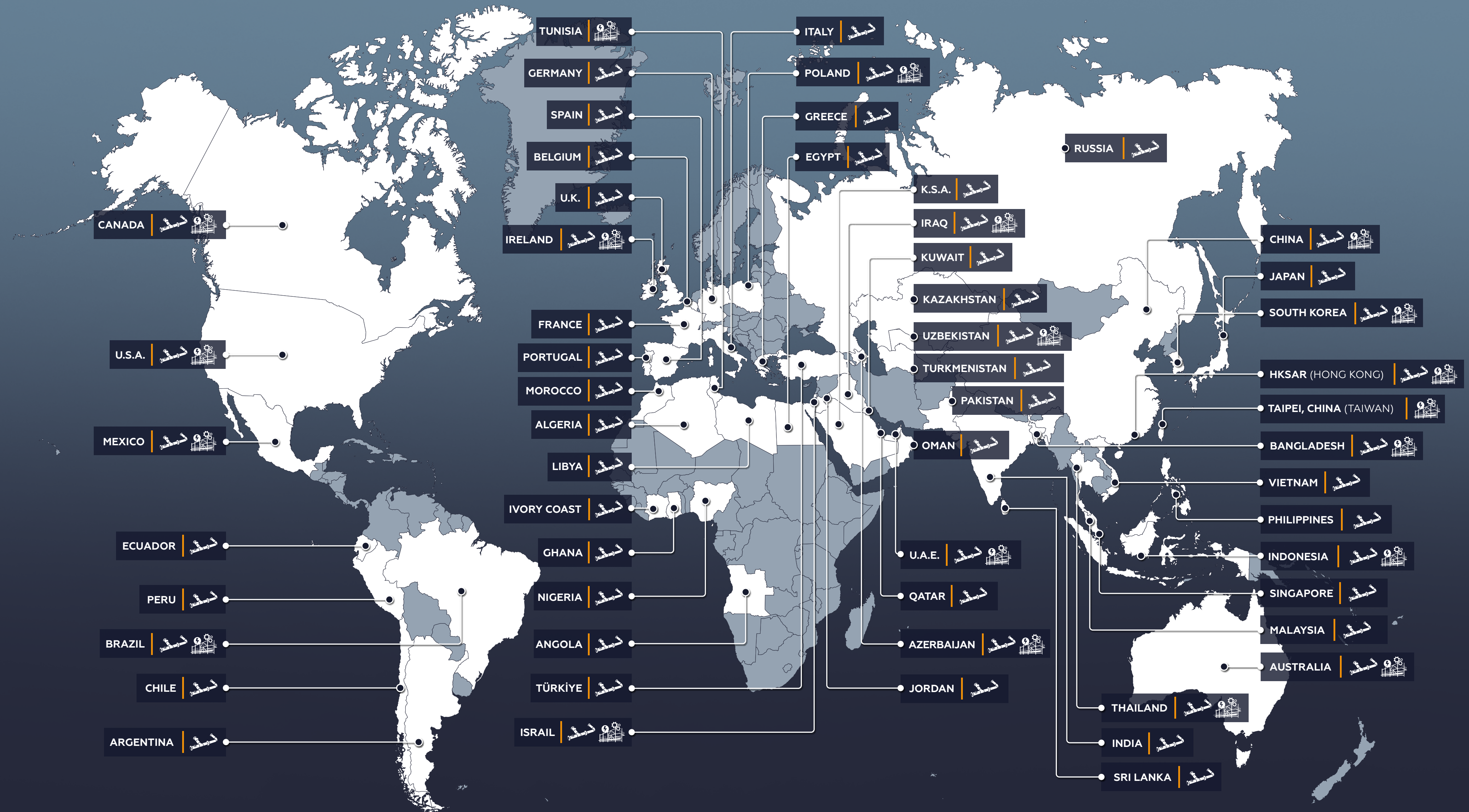
ENERGY SERVICES



QUICK RELEASE FLANGES



# WORLDWIDE PROJECTS





20,000 ton / 1.5 Million DIA"  
SPOOL CAPACITY

# PIPE SPOOLS



MAIN STEAM PIPING



SKID PIPING



BOP PIPING



LNG PIPING



7,520 ton  
ASSEMBLY / ANNUAL

# MODULES



MHI GAS TURBINE ENCLOSURE MODULES



SIEMENS AIP MODULES



GENERAL ELECTRIC EPE 9HA 9016 MODULE



GENERAL ELECTRIC 9 FA MSD PIPING MODULES



# SKID/MODULE PROJECTS



GENERAL ELECTRIC A160 SKID



MITSUBISHI POWER M701F5 FUEL GAS MODULE



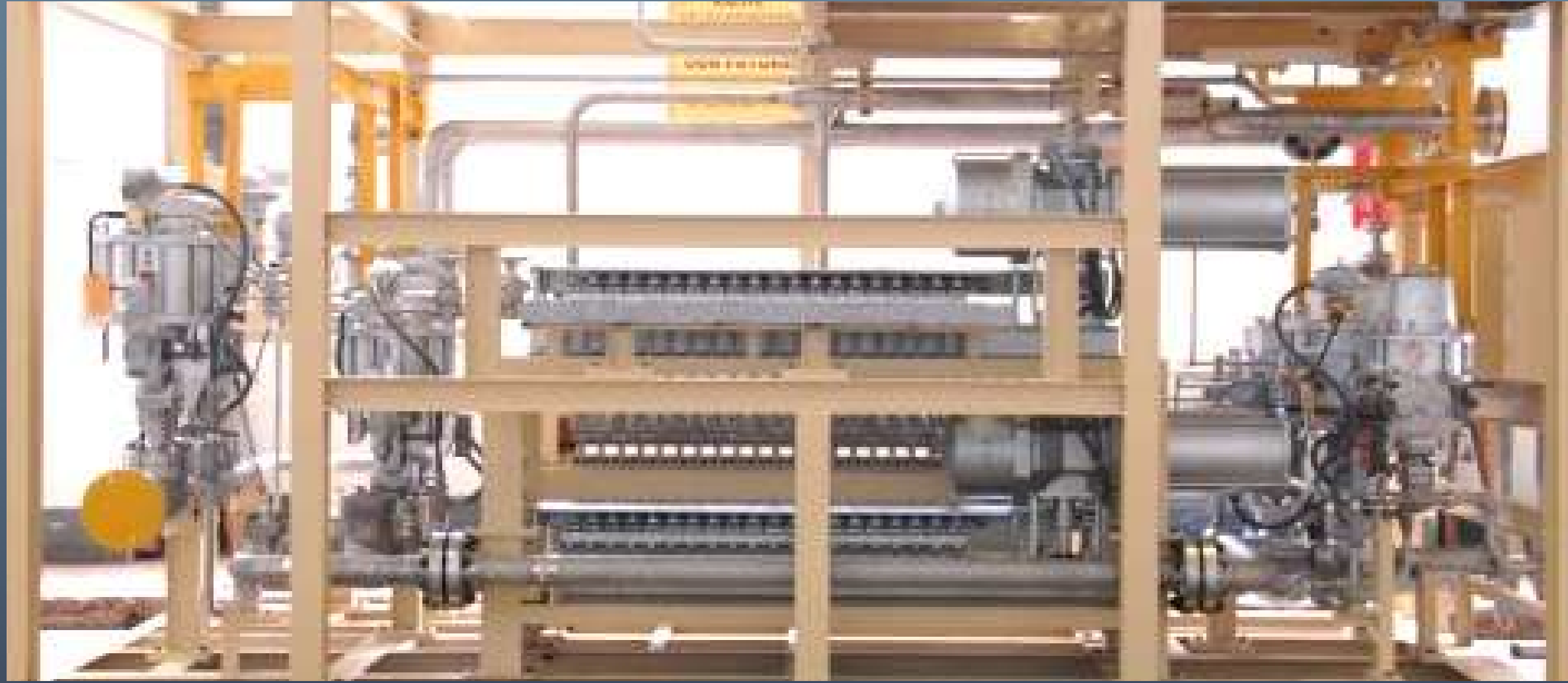
MITSUBISHI POWER PURGE AIR SKID



MITSUBISHI POWER 501J FUEL GAS & PURGE AIR ASSEMBLIES



# SKID/MODULE PROJECTS



MITSUBISHI POWER FLOW DIVIDER



MITSUBISHI POWER FUEL GAS SKIDS



MITSUBISHI POWER M701 F4 FUEL GAS SKID



MITSUBISHI POWER M701 F4 FUEL GAS SKID



# FUEL GAS JIG



MITSUBISHI POWER AMERICA M501J JIG



MITSUBISHI POWER AMERICA M501J JIG



MITSUBISHI POWER M701F4 JIG



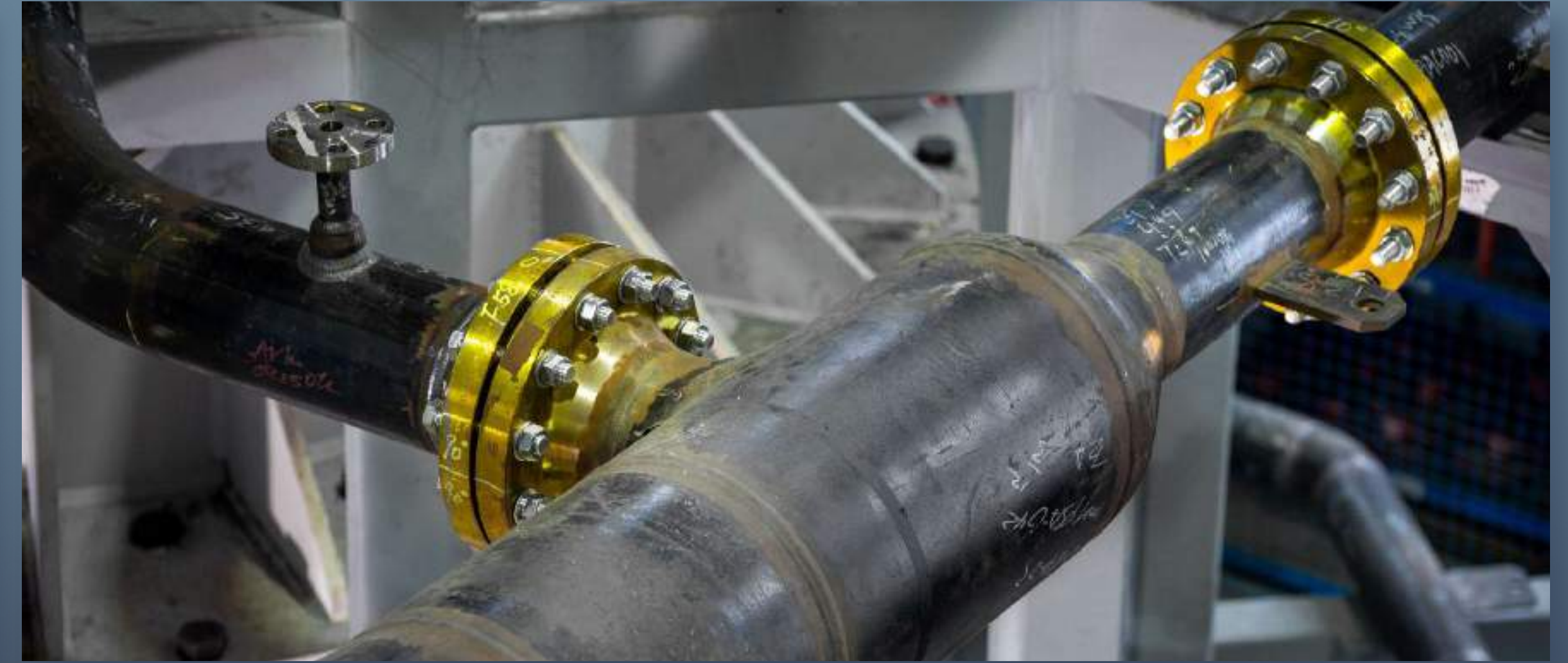
MITSUBISHI POWER M701F4 JIG



# BLEED AIR JIG



mitsubishi power m701f4 jig



mitsubishi power m701f4 jig



mitsubishi power m701f4 jig



mitsubishi power m701f4 jig



# PHARMACEUTICAL SKIDS



CPME BLENDER SKID



CPME BLENDER SKID



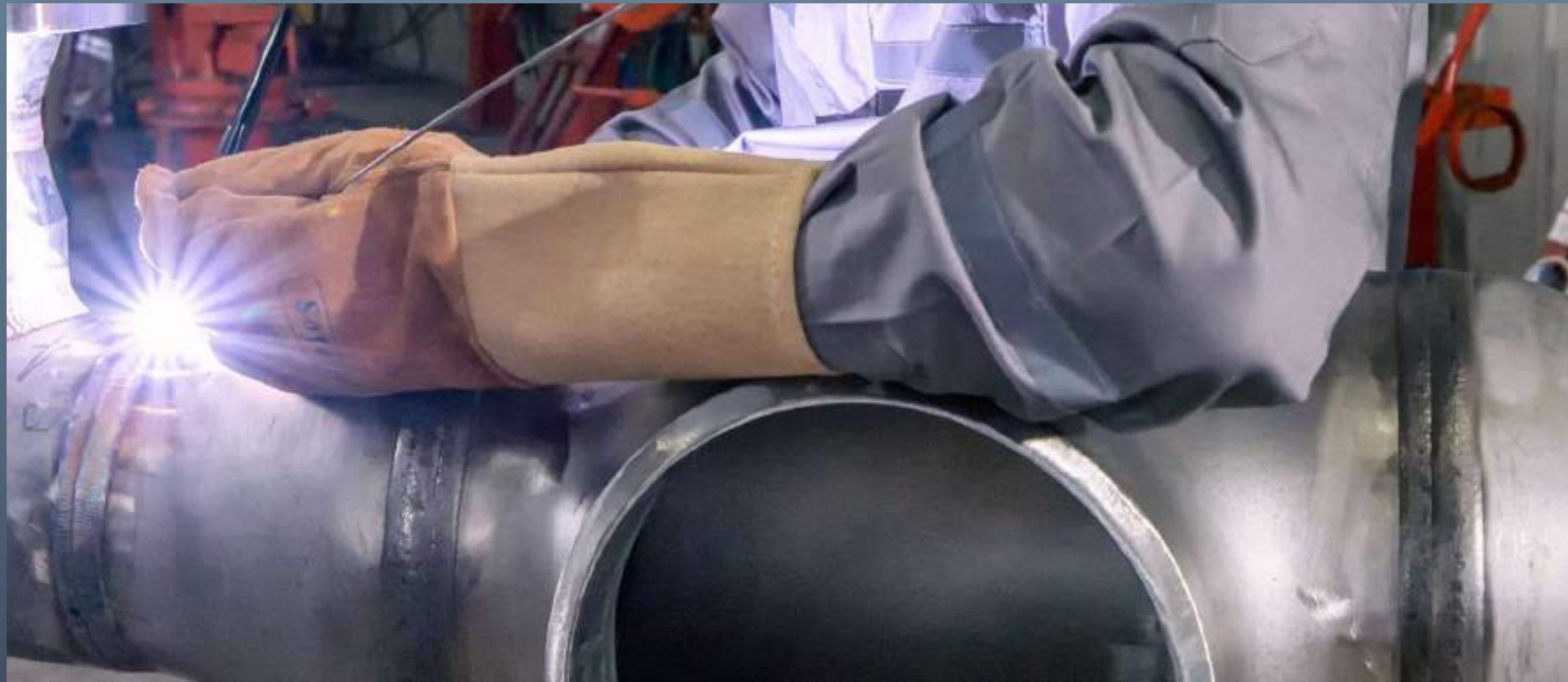
CPME BLENDER SKID



CPME BLENDER SKID



# ENERGY SERVICES & QUICK RELEASE FLANGES



SUPPLY of PIPING and AUX. COMPONENT for MAINTENANCE



6 DIFFERENT SIZES



SHORT CYCLE TIME



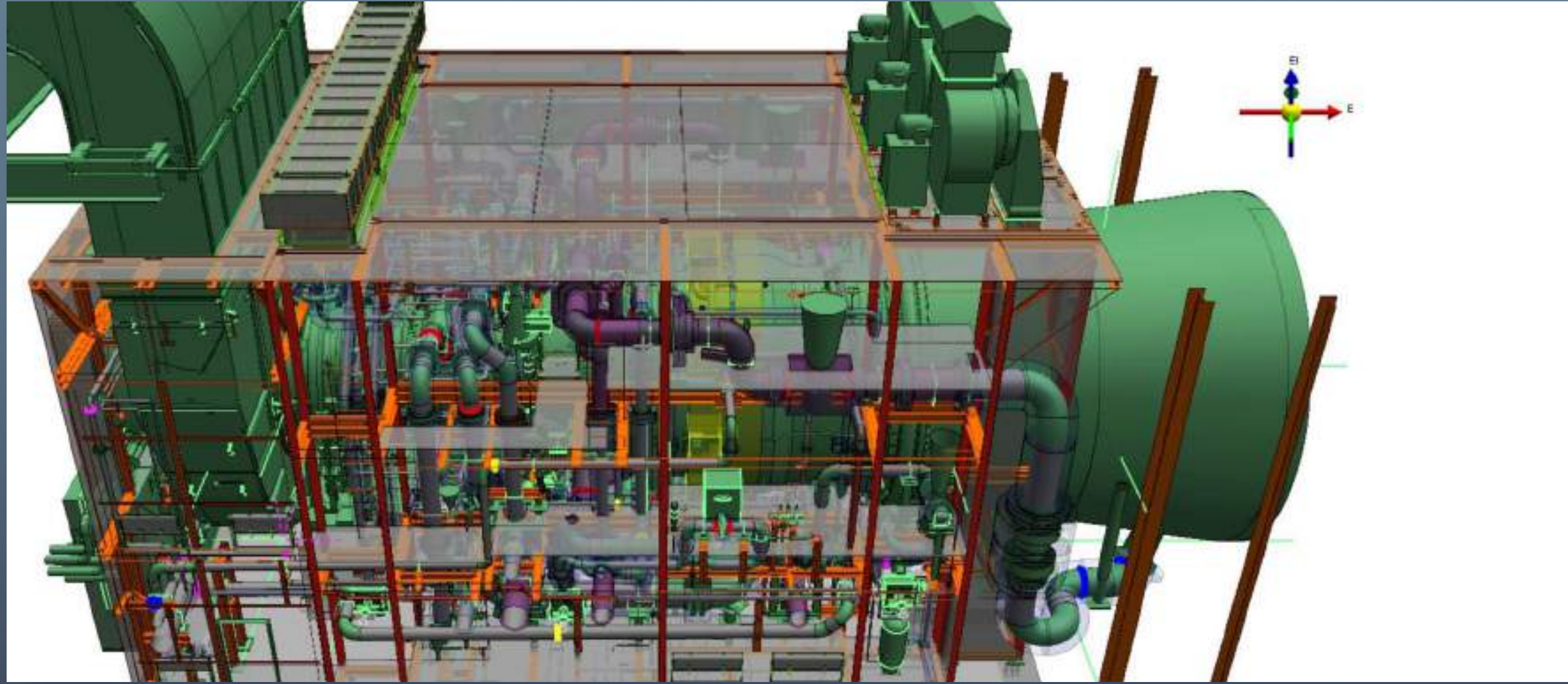
214 DIFFERENT PART NUMBERS



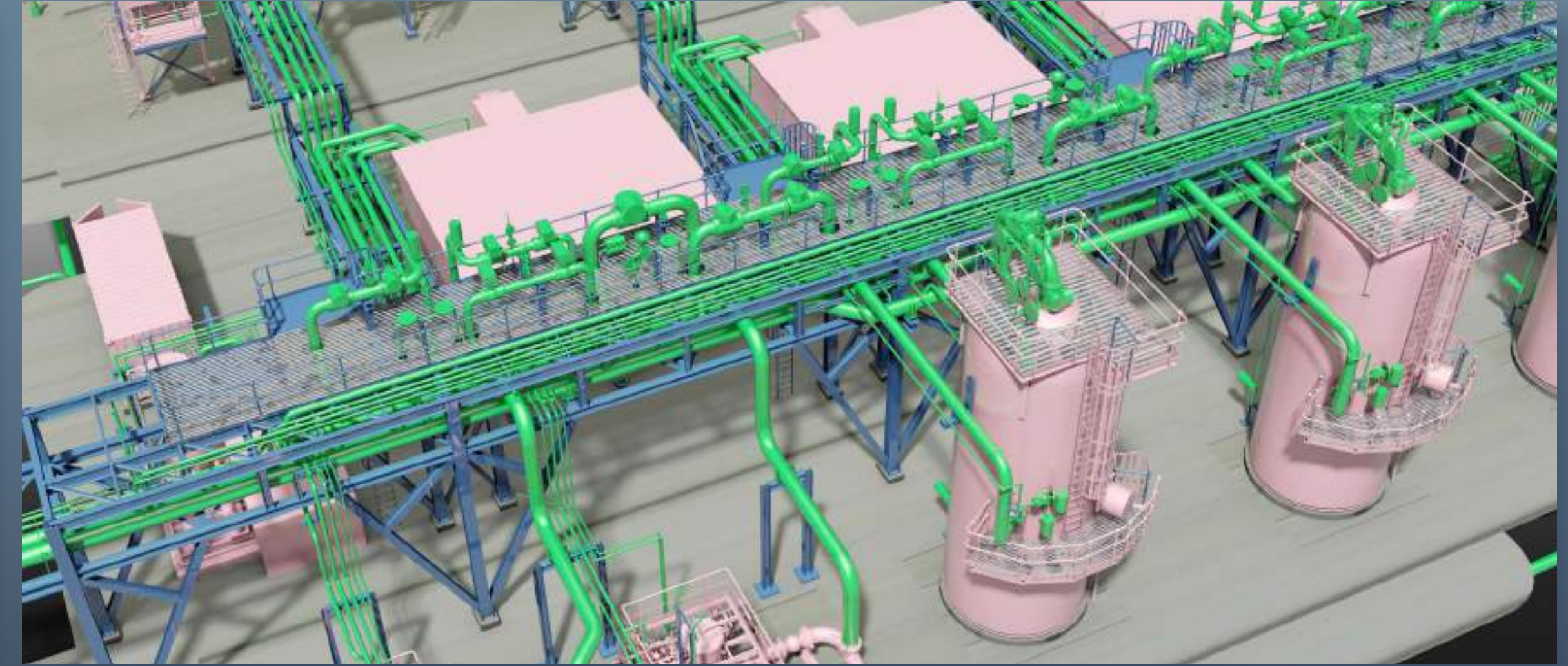
- PLANT & PIPING DESIGN
- MECHANICAL DESIGN & FEA ANALYSIS
- PRESSURE VESSEL DESIGN

- CIVIL & STRUCTURAL DESIGN
- ELECTRICAL & INSTRUMENTAL DESIGN
- MODULAR & JIG DESIGN

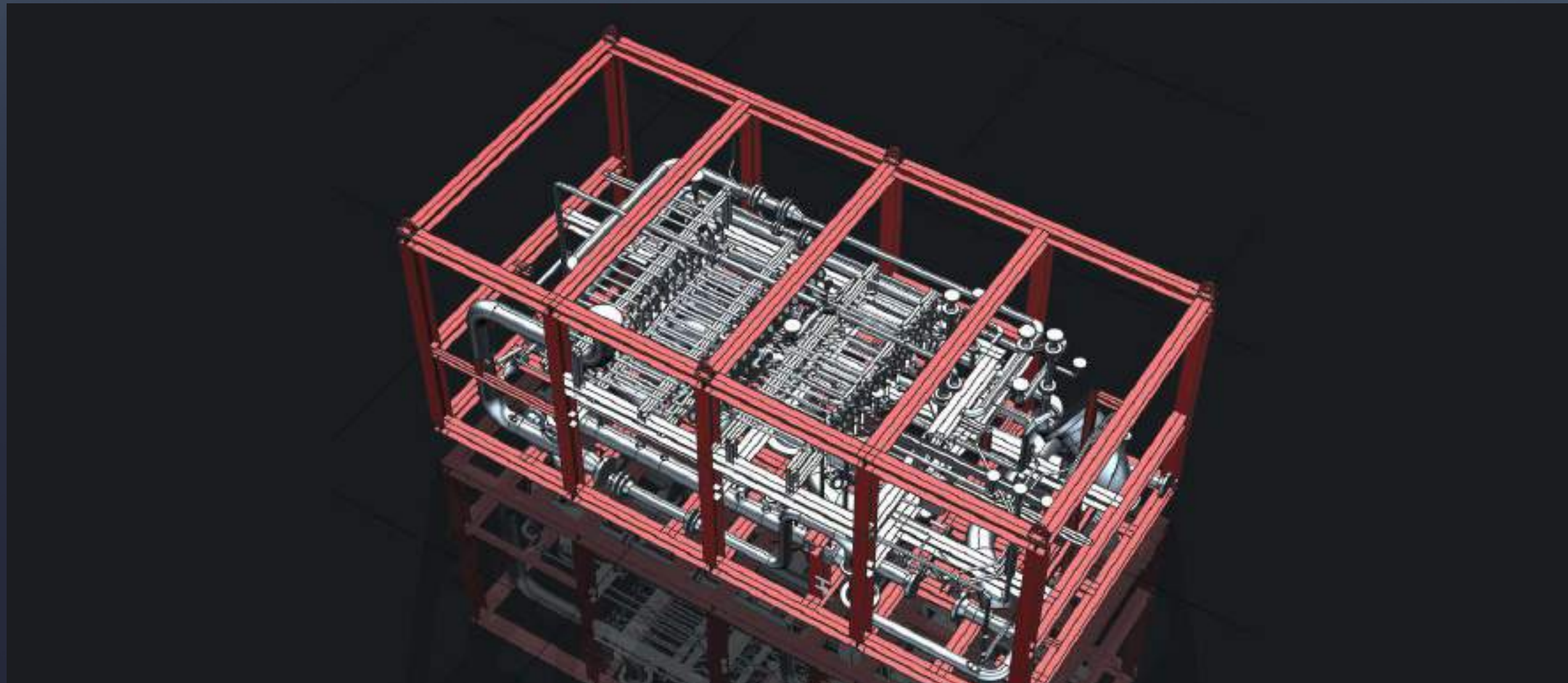
# ENGINEERING



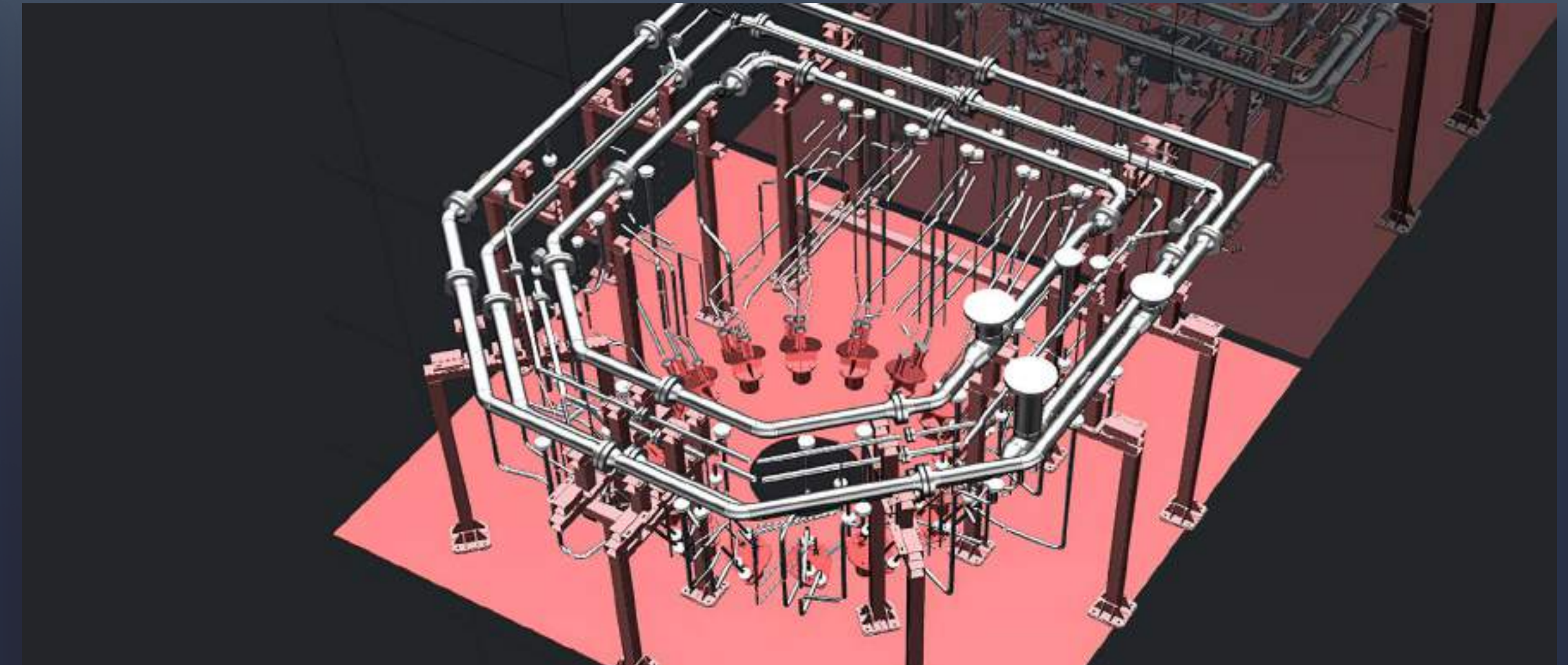
MHI GAS TURBINE MODULAR ENCLOSURE



WEST QURNA-2 OILFIELD



MHI MODULAR SKID



GAS TURBINE JIG



# OPERATIONS



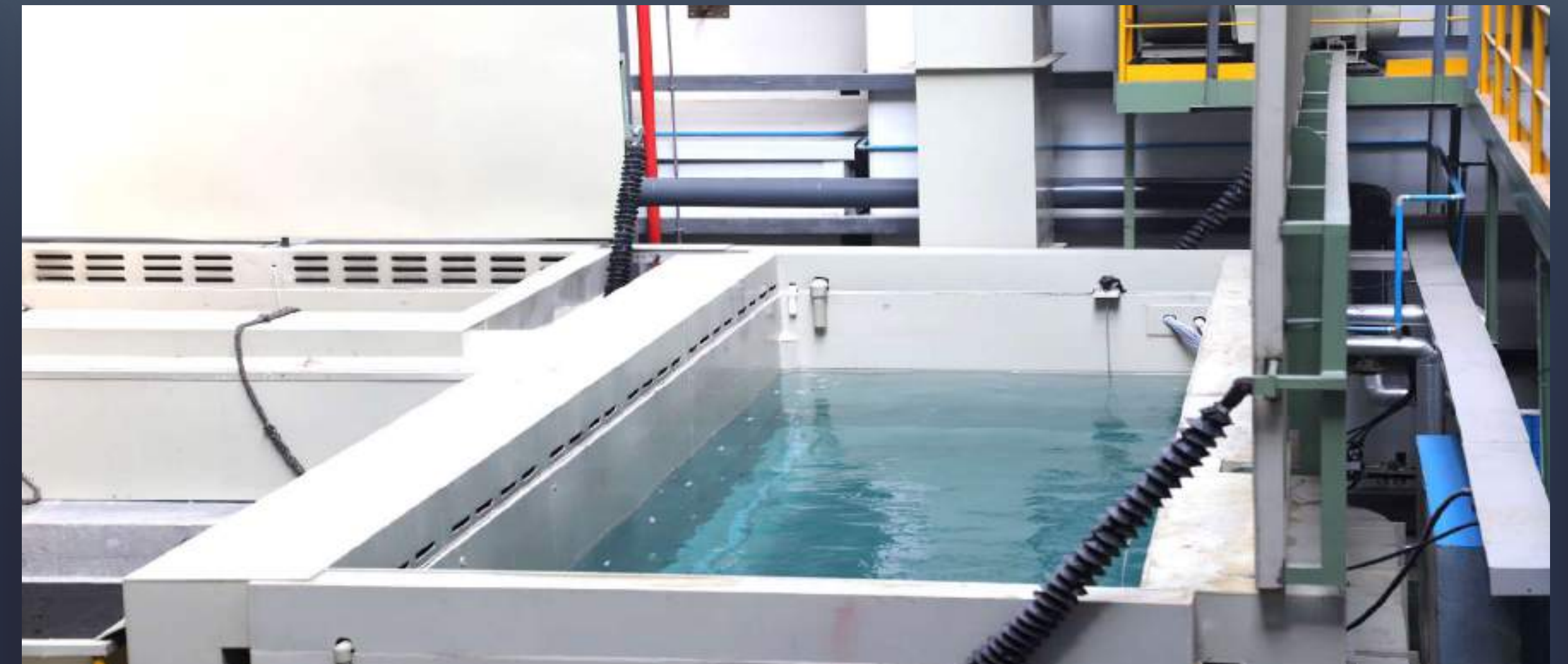
FABRICATION BAYS



HIGH MODULE ASSEMBLY BAY



AUXILIARY EQUIPMENT NDT



AUXILIARY EQUIPMENT PICKLING & PHOSPHATE POOL



# OPERATIONS



COLD & ROUND BENDING



CUTTING



MANUAL WELDING



AUTOMATION WELDING



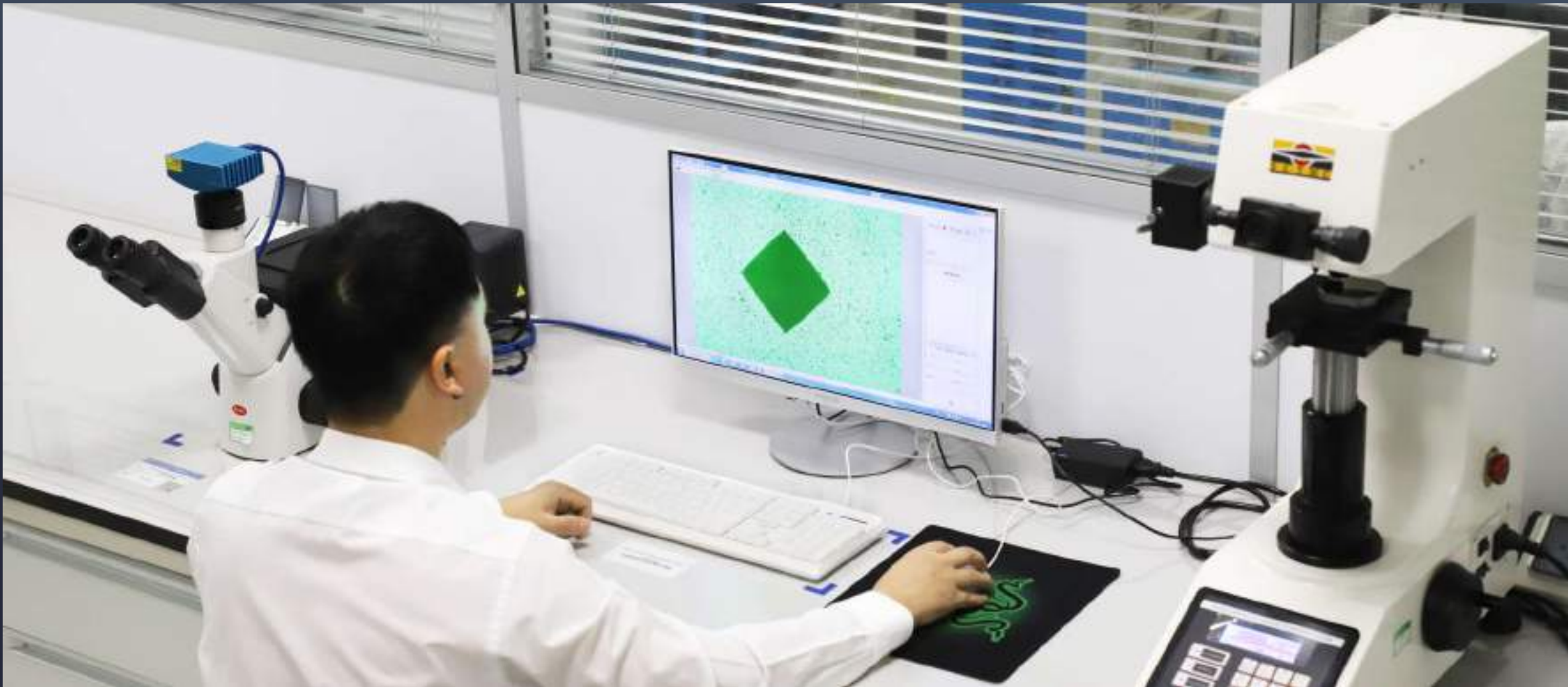
# OPERATIONS



CERTIFIED QUALITY MANAGEMENT SYSTEMS



INDEPENDENT QA&QC ORGANIZATION



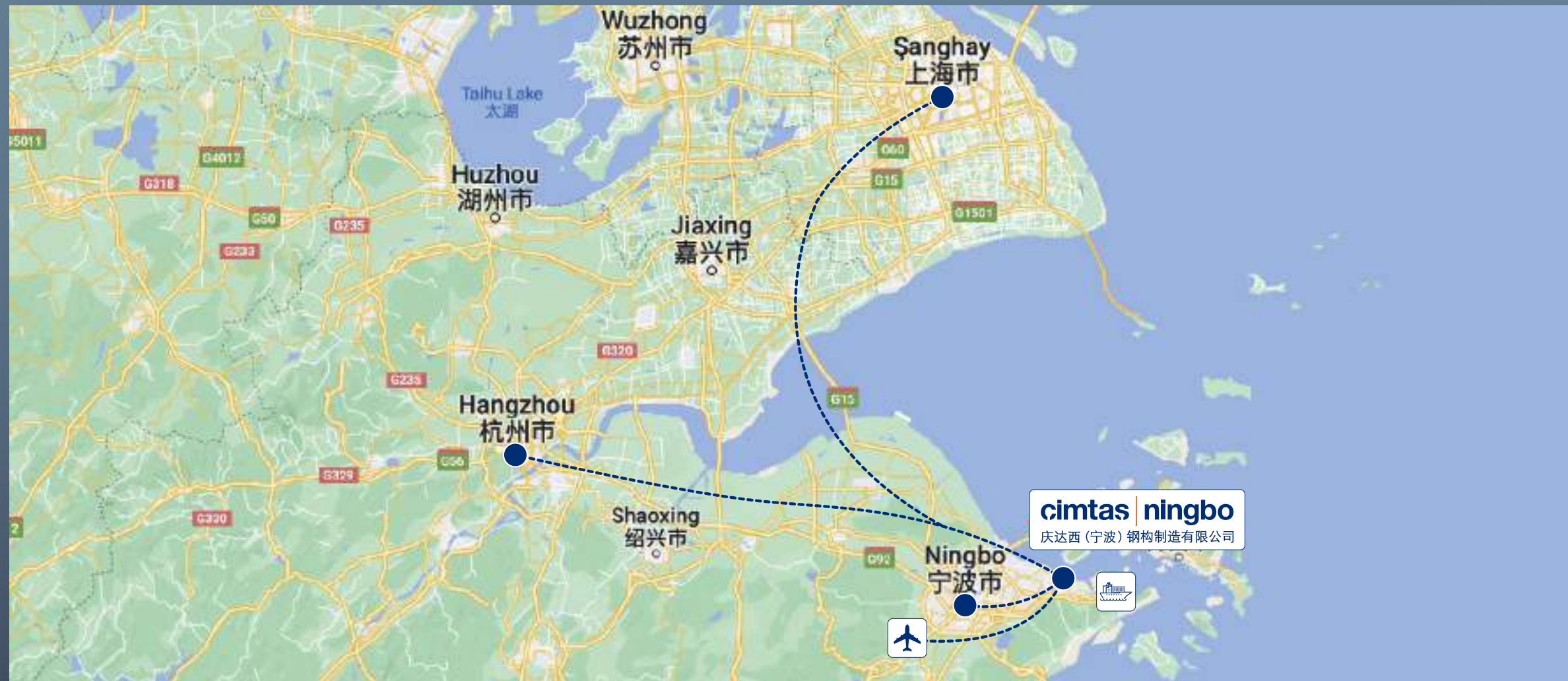
QA/QC LABORATORY



3D MEASUREMENTS



# LOGISTICS



LOCATION



TRANSPORTATION



NEARBY DEEP SEAPORT



STEEL FRAME PACKING



# ENVIRONMENTAL PROTECTION



THE C A T A L Y T I C C O M B U S T I O N S Y S T E M



W A S T E W A T E R T R E A T M E N T S Y S T E M



A C I D M I S T P U R I F I C A T I O N S Y S T E M



C H E M I C A L S T O R A G E A R E A



# GROUP COMPANIES



Gemlik / Türkiye

## cintas | steel

Fenced Area : 160,000 m<sup>2</sup>  
Covered Area : 62,000 m<sup>2</sup>  
Number of Employees: 2,000  
Annual Fab. Capacity : 80,000 t



Gemlik / Türkiye

## cintas | pipe

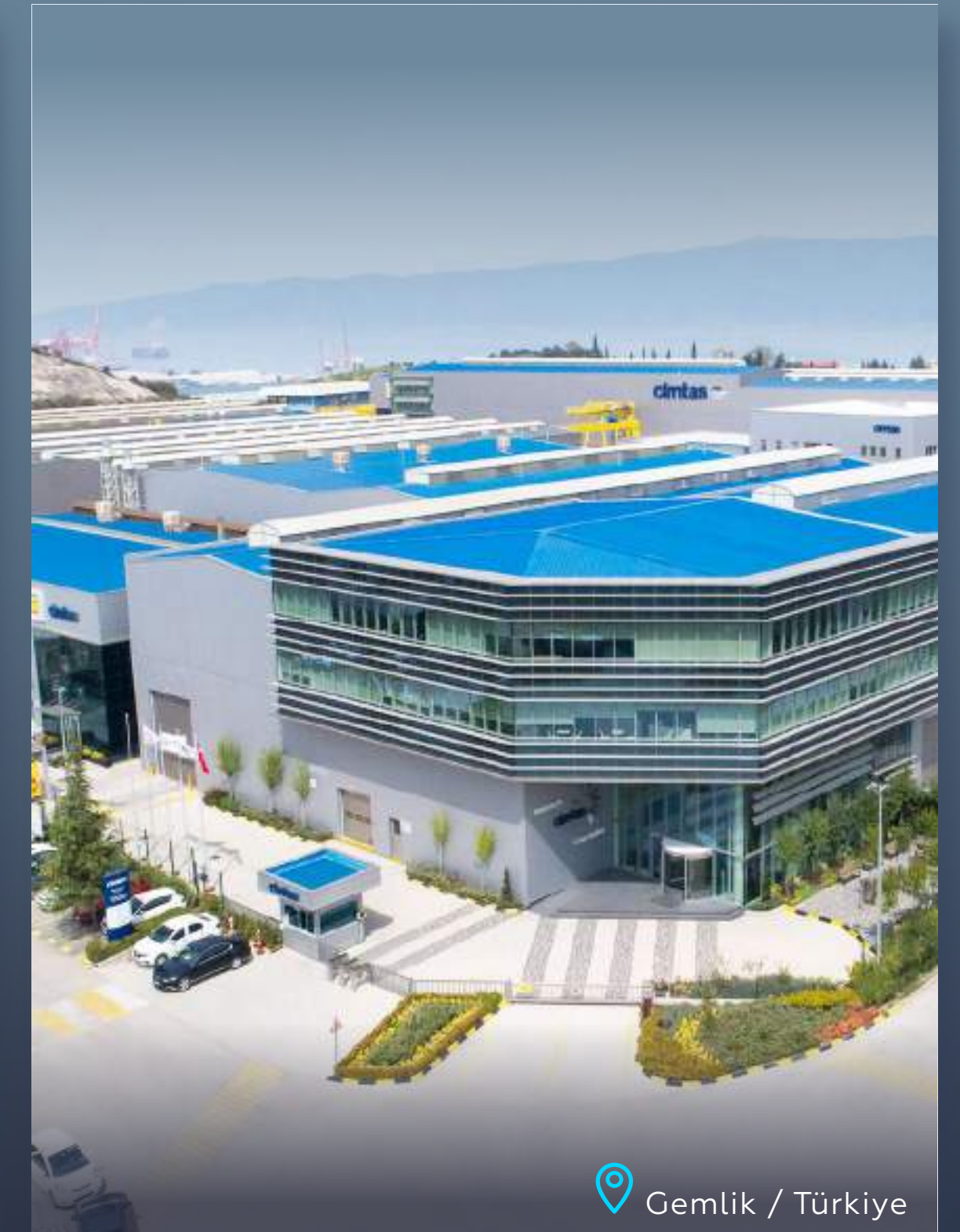
Fenced Area : 120,000 m<sup>2</sup>  
Covered Area : 75,000 m<sup>2</sup>  
Number of Employees : 1,000  
Annual Spool Fab. Capacity : 42,000 t  
Pipe-Fitting Manufacturing : 165,000 t  
Annual Fittings Capacity : 6.000 t  
Annual LSAW Process Pipe Capacity: 40.000 t  
Annual LSAW Line Pipe Capacity : 160.000 t



Kocaeli / Türkiye

## cintas | shipyard

Fenced Area : 270,000 m<sup>2</sup>  
Covered Area : 55,000 m<sup>2</sup>  
Number of Employees: 1,400  
Annual Fab. Capacity : 80,000 t



Gemlik / Türkiye

## cintas | machining

Fenced Area : 13,000 m<sup>2</sup>  
Covered Area : 12,000 m<sup>2</sup>  
Number of Employees: 300



# SUSTAINABILITY

Çimtaş, along with the efforts to attain its wide-range social and economic sustainability goals, is striving to reduce its environmental footprint with all solar-powered facilities, paperless processes and responsible water & waste management approach; and by caring for an olive yard with a tree for each of its employees, a special olive kind awarded with protected designation of origin (PDO) status by the European Union at region where Çimtaş's core facilities are located.





THANK YOU  
FOR MORE

[www.cimtas.com](http://www.cimtas.com)

